

Take care of our earth, from you and me!



---

welcome visit online disk  
<http://www.cd-ipc.com>

# DVR/NVR/AVR/CVR/TVR Quick Operation Guide

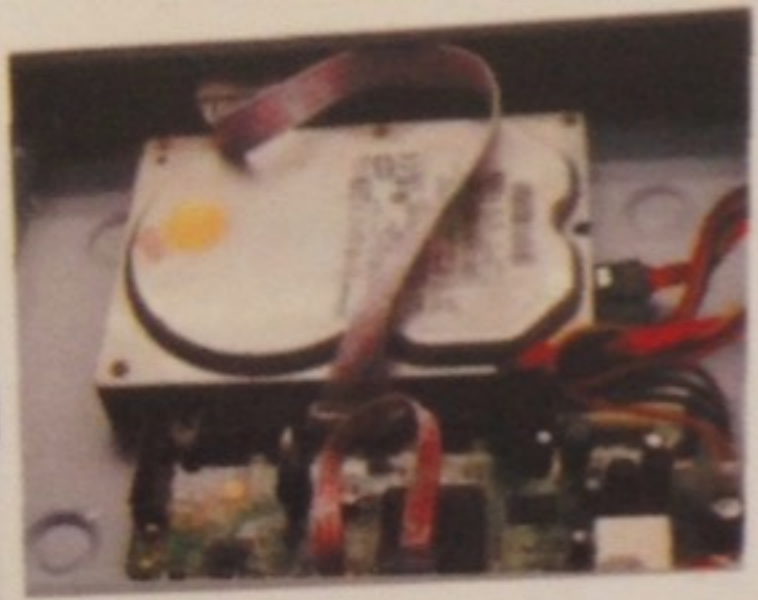
# 1、 Hard Disk Installation Guide



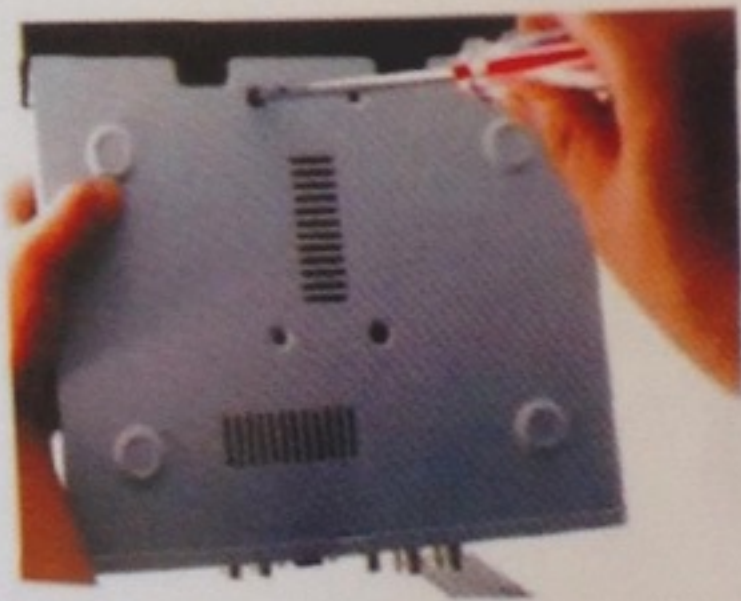
① Unscrew and remove recorder's rear panel;



② SATA and power cables inside;



③ Connect SATA cable and power cord securely to hard disk;

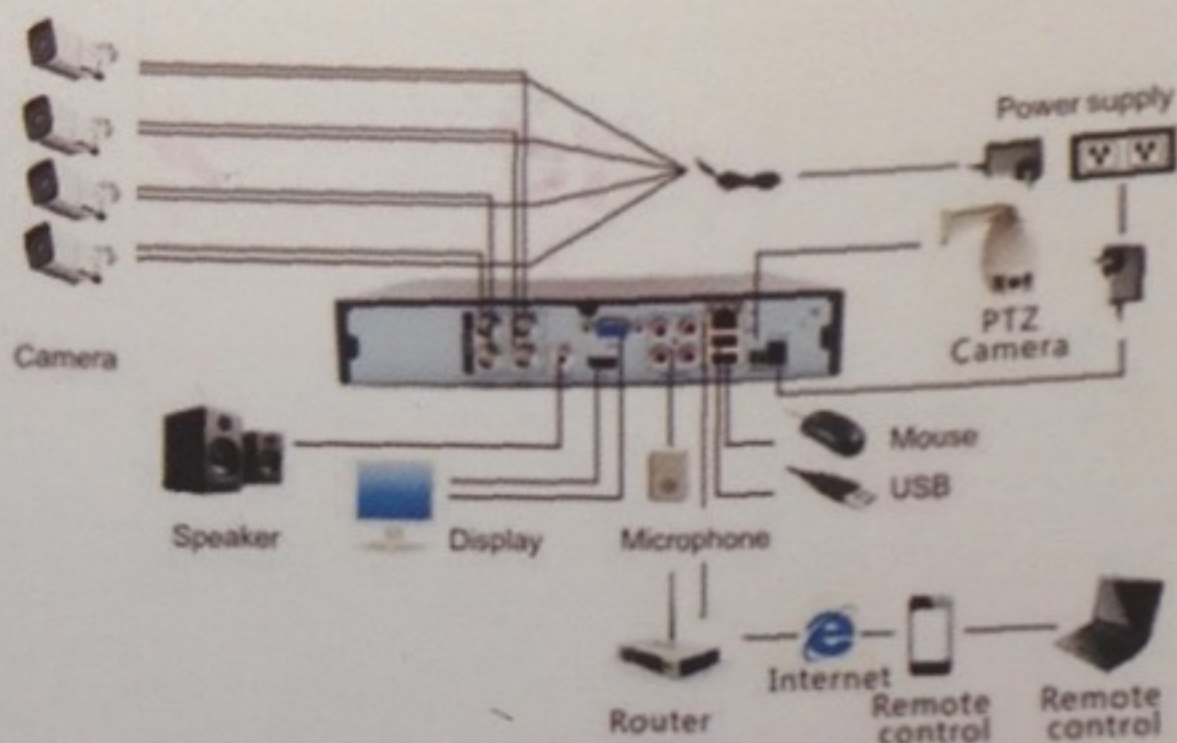


④ Screw bottom screws from outside of recorder;



⑤ Recover recorder's cover and re-screw all screws.

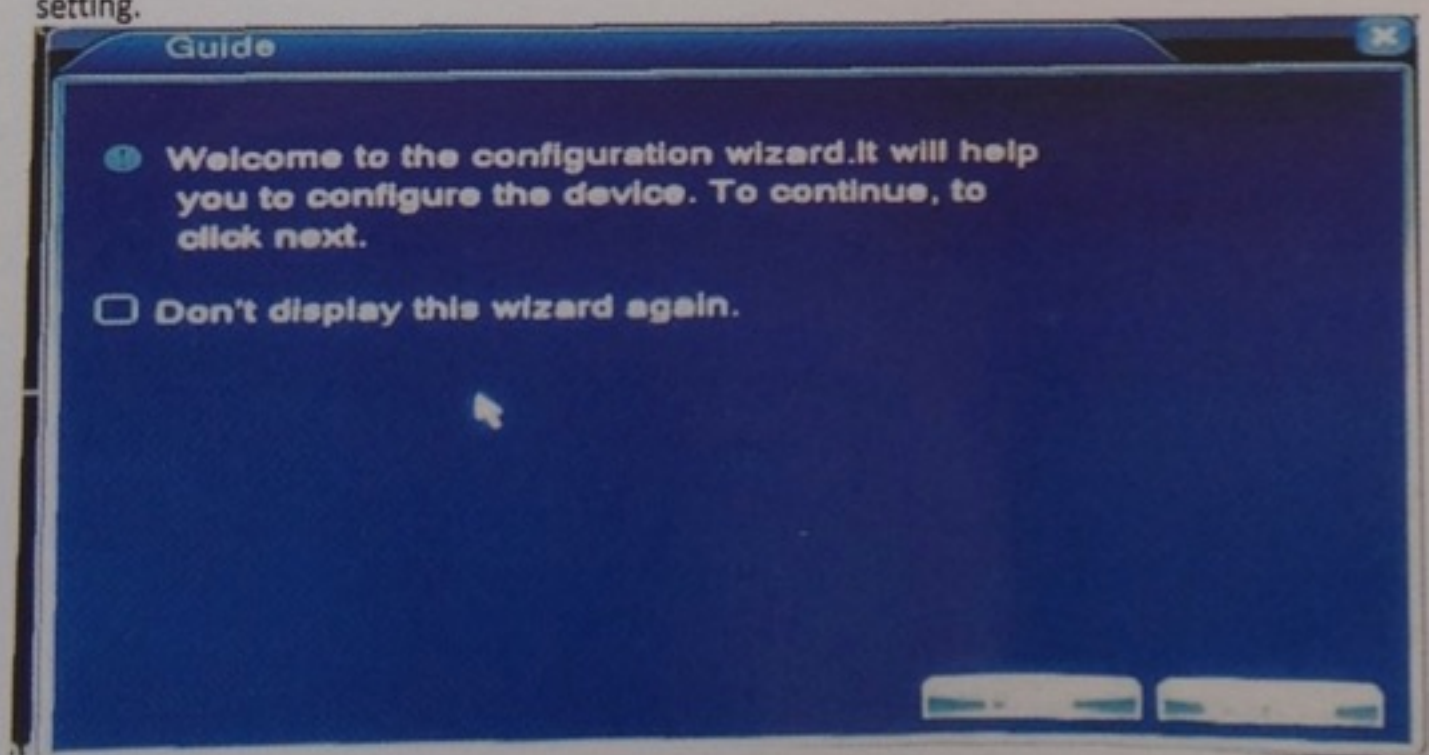
## 2、Equipment Connection



## 3、Machine Setting

### ① Guide/Start up Wizard

The system will open "Setup Wizard" screen automatically, for guiding user to set up basic setting.



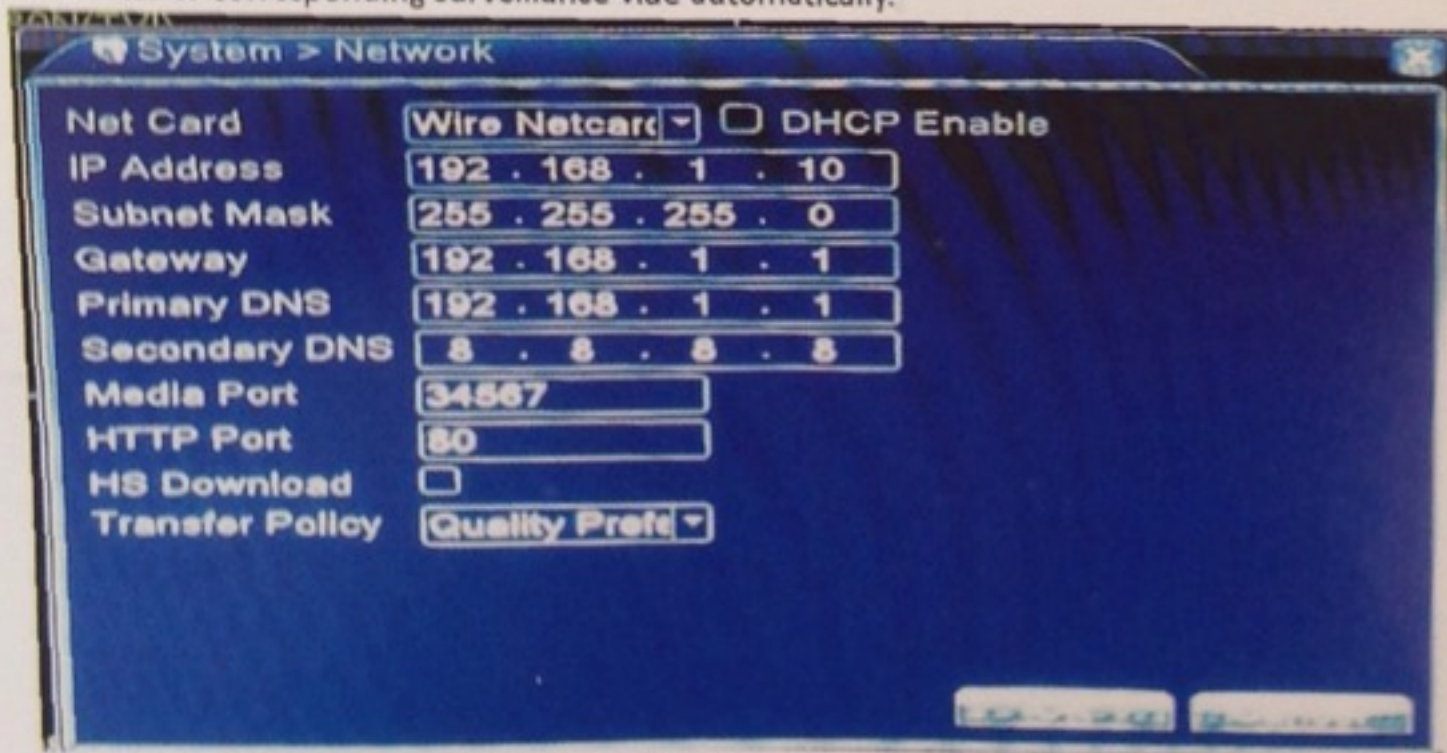
### ② Equipment Login

After connection and powered, recorder's front panel indicator light will be turned on, and system shows normal boot screen. After completion of loading, log-in interface will pop up. Default account is [admin], password is blank as shown below:



### ③ Network Setting

Please set corresponding network parameter through the following steps:[Main menu]→[System settings]→[Networks settings].Default IP address:192.168.1.10.After setting and click OK,system will access to corresponding surveillance vide automatically.



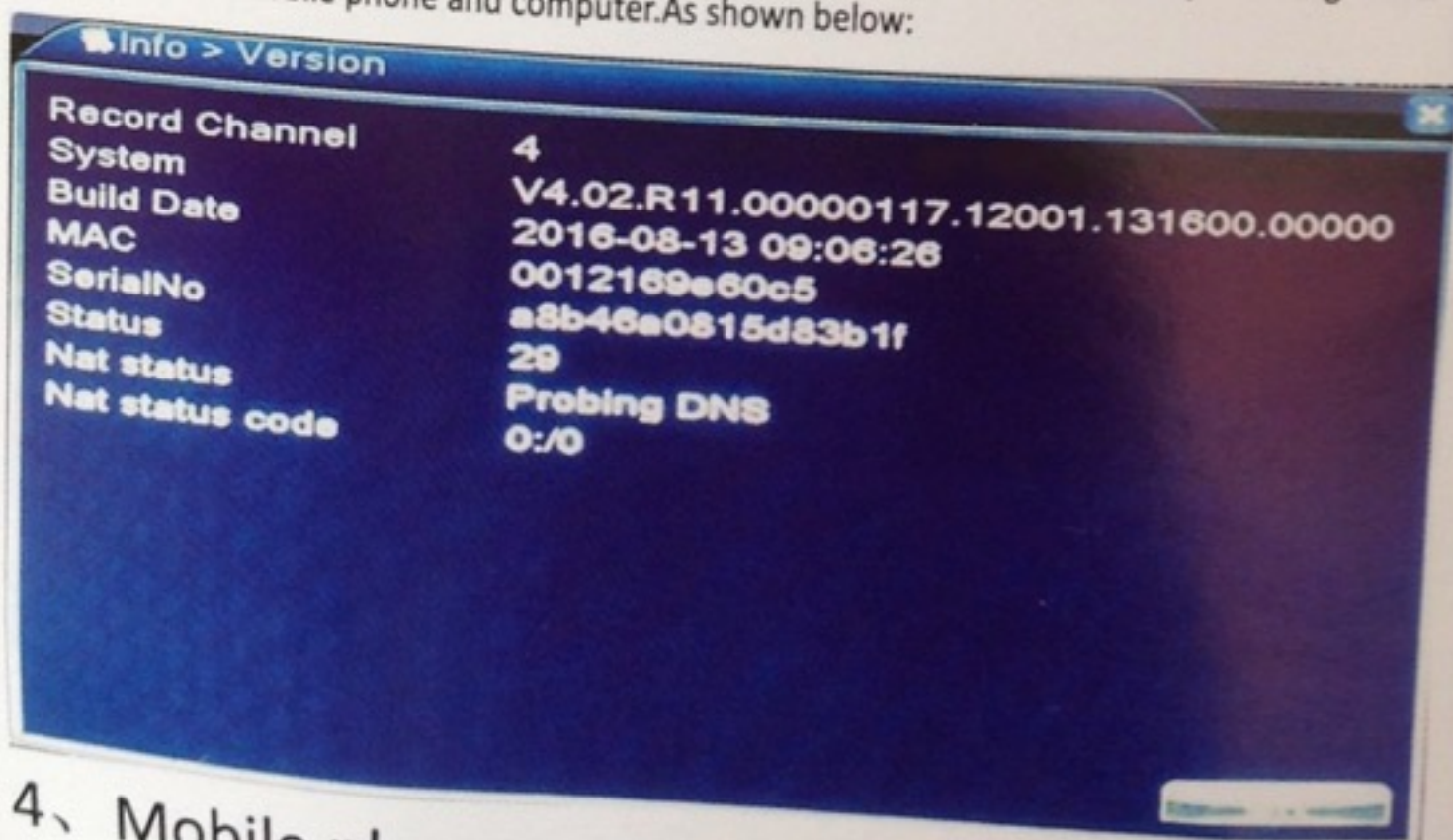
### ④ Record playback

You can enter video playback interface through desktop shortcut menu,or through the following steps:[main menu]→[video function]→[record playback].



#### ⑤ Version Information

Right mouse click on main interface, operate as the following: [main menu] → [system information] → [version information], then you can search out that recorder's serial number and network state. When NAT shows connection success, then you can live view video by entering serial number on your mobile phone and computer. As shown below:



#### 4、 Mobile phone watch method

① Scan QR codes on the following interface (Please be noted that iPhones use "iPhone APP", Android cellphones use "Android APP"), download and install mobile client "XMEYE". (You can also download "XMEYE" in iPhone App Store directly and then install)

Install mobile app

iPhone APP



Android APP



① Scan QR code to download mobile app and then finish installation step by step.

PREVIOUS

NEXT

Cancel

② In your first running, you will need to register account to log in and then manage equipment, through this registered account, you can add and manage multiple devices. If you don't want register, please enter by "Local Login" and then manage devices.



Remember me

Auto-login

Register user

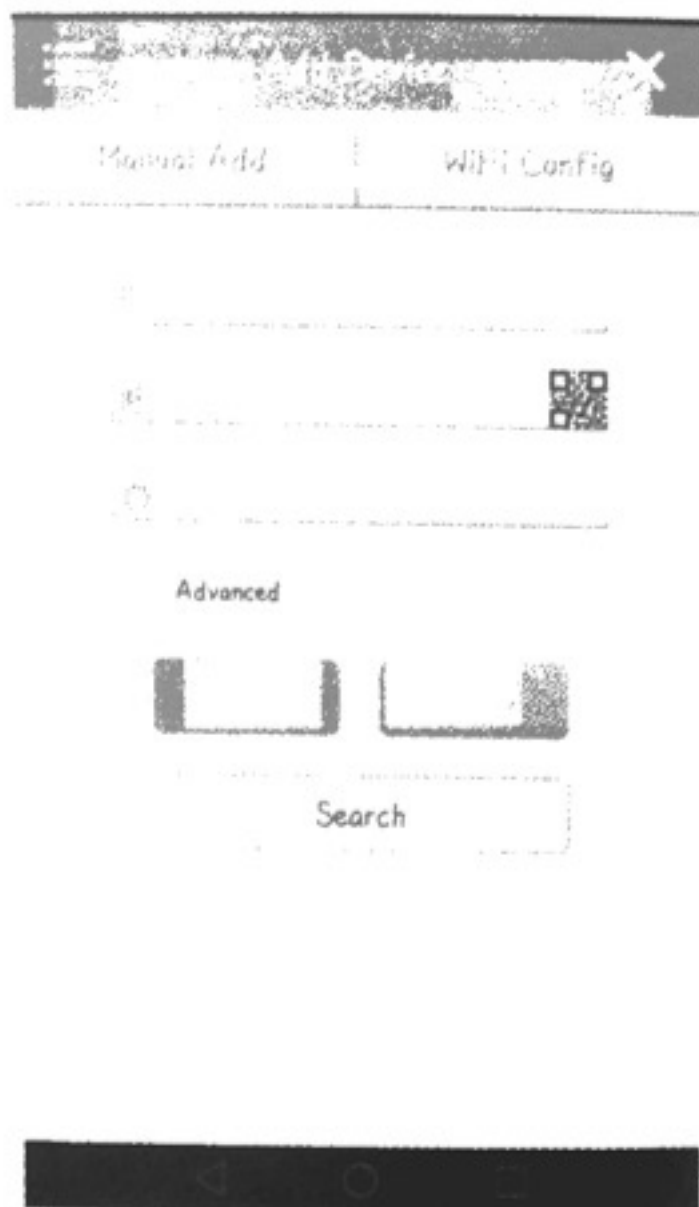
Modify password

Other Ways login

Local Login

Direct Login

③Click the "+" on the top right corner after successful login,scan XMEYE QR Code to add device in the startup wizard or enter the recorder.Enter "Device Name""Username"(arbitrarily)," Password"(Default password is empty),click the device name you wanna check,choose a good channel can be normal access device to watch the figure.



## 5、 Guide to manager computer CMS

Download CMS software(windows version) from recorder's CD,and install it.


Login the CMS software(admin/password is empty),[System Setting] → [Monitoring point management] → [add area] → [select area] → [click Add device] → [IP search-add settings].Then you can preview in the software for equipment management.[Note: Client remote viewing can only login by inputting serial number in cloud (<http://www.xmeye.net/main>),other operating is the same as the above]





## 6、IE viewing method

Access to [www.xmeye.net](http://www.xmeye.net) , choose "Device Login",input Serial NO.,then you can do remote viewing and playback operation,etc.

By User	By Device
<input type="text"/> Username	
<input type="password"/> Password	
Verify	
<input type="checkbox"/> Remember	<a href="#">Forgot Password?</a>
<input type="button" value="Login and Preview"/>	
Please Click "Enter Guide" if you visit first	
<input type="button" value="Register"/>	

Friendly reminder: When the remote view is failed,click the right main menu.[System information-Version Information] to check equipment status(NAT)is online or not.If it shows searching DNS,please check network connection is normal or not,remove the option of automatically obtain IP address.Manually change the IP address of LAN,and change gateway to be the same as routing gateway.

Take care of our earth, from you and me!



welcome visit online disk  
<http://www.cd-ipc.com>

# DVR/NVR/AVR/CVR/TVR Quick Operation Guide